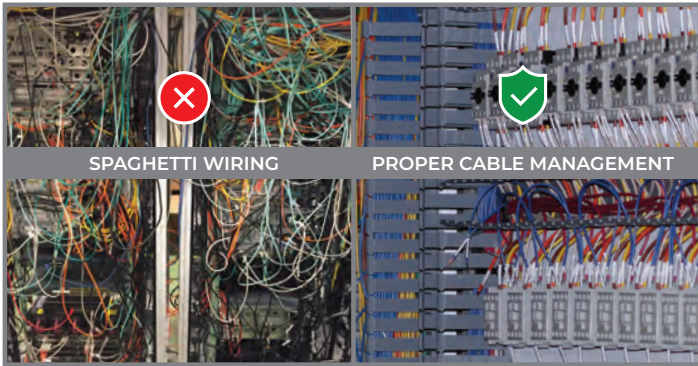


**45+**  
YEARS IN BUSINESS

**10,000+**  
TOTAL CONTROLS PROJECTS

**1<sup>ST</sup> PROJECT**  
GRAIN – 1974    AUTOMOTIVE – 1978



Salina, KS

Tulsa, OK

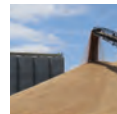
Arlington, TX

San Luis Potosi  
México

## CERTIFICATIONS & QUALIFICATIONS

- ISO 9001
- UL 508A, UL 698A, C-UL5080A
- Rockwell System Integrator
- Platinum Inductive Automation Integrator
- Quality Management System
- ERP System
- Lean and 5S
- 2,000+ days without a Lost Time Accident

## INDUSTRIES



- Aggregate Mining
- Automotive
- Baggage Handling
- Brick
- Energy
- Fiberglass
- Food & Beverage
- Glass
- Grain Handling
- Industrial & Commercial Machinery
- Industrial Paint/Coating
- Pharmaceutical
- Plastic
- Water & Wastewater

**kasa**  
CONTROLS & AUTOMATION

[www.kasacontrols.com](http://www.kasacontrols.com)

[info@kasacontrols.com](mailto:info@kasacontrols.com)

785-825-7181

U.S. Corporate Office  
418 East Avenue B  
Salina, Kansas 67401



# kasa

## CONTROLS & AUTOMATION

### PANEL BUILD

Kasa's control panel design and assembly is about craftsmanship. We understand the importance of neat, organized wiring, especially if you ever have to change a panel in the future or troubleshoot a problem — no spaghetti wiring with our panels. The interior and exterior are meticulously laid out and wired with artisan skill, and labeled with easy-to-read engraved labels.

### OUR SHOP

- ✓ 40,000 sq. ft.
- ✓ Environmentally Controlled
- ✓ 20 ft. High Ceilings
- ✓ Certified Wood Crates
- ✓ Covered Loading Dock with Overhead Crane
- ✓ On-Site Production Engineer
- ✓ Quality Control/Quality Assurance
- Custom Enclosures
- NFPA-79 Capability
- NEC (NFPA-70 Compliance)
- UL 508A, UL 698A, C-UL5080A